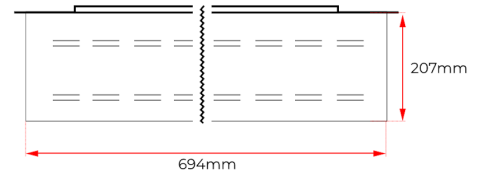
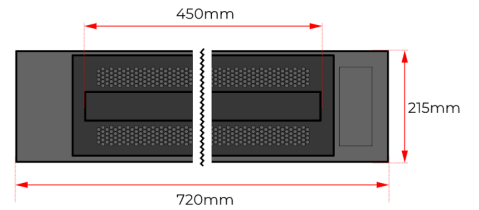
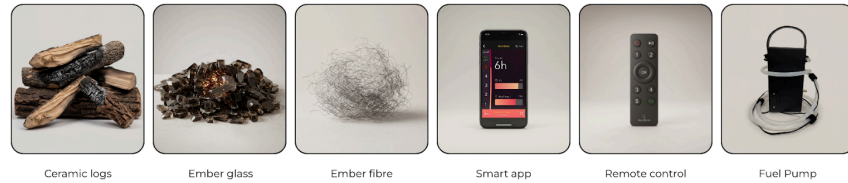
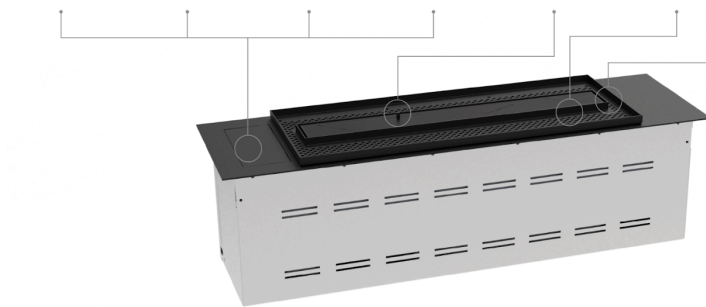


LOGICWOOD LINEAR - ELECTRONIC BURNER - 720 mm

LogicWood Linear is a bioethanol burner for built-in fireplace solutions, combining multiple flame lines with a realistic wood effect. The Split Flame Configuration distributes the flames across separate flame tubes, allowing ceramic logs to be arranged naturally between the flames. Ceramic logs and an illuminated ember bed create depth and a natural flame appearance. The burner delivers a calm and uniform flame pattern, while integrated lighting enhances the ember effect. Suitable for installation in non-combustible materials.



GENERAL INFORMATION

| | |
|----------------|------------------|
| Model | LogicWood Linear |
| Configuration | 720 mm |
| Burner Model | LogicWood - 720 |
| Operation Type | Electronic |
| Production | Made in Denmark |

DESIGN & MATERIALS

| | |
|----------------|---|
| Material | Stainless steel / Powder-coated aluminium |
| Finish | Standard black powder coating |
| Glass Quality | N/A |
| Standard Glass | Not required |

BURNER SPECIFICATIONS

| | |
|----------------|--------------------------|
| Fuel Type | Bioethanol 96.5 - 97.5 % |
| Flametray (mm) | 450 |
| Flame Levels | 5 + ECO-Wave |

PHYSICAL SPECIFICATIONS

| | |
|-----------------------|--------------------------|
| Dimensions (mm) | W: 720 × H: 207 × D: 215 |
| Glass Dimensions (mm) | N/A |
| Weight: (kg) | 19.0 |

PERFORMANCE

| | |
|--------------------------|--------------------------|
| Capacity (L) | 5.3 |
| Max Level Burn Time (H) | 10.2 |
| Nominal Heat Output (kW) | 2.9 |
| Fuel consumption (ml/h) | Depending on flame level |

INSTALLATION REQUIREMENTS

| | |
|--------------------------|---|
| Cut-out Dimensions (mm) | W: 705 × H: 300 × D: 200 - Min. air gap above cut-out: 500 mm |
| Minimum Room Size (m³) | 62 |
| Power Supply | 230 V AC (220 V compatible), 50–60 Hz, earthed supply |
| Chimney | Not Required |
| Installation Environment | Indoor |

FEATURES

| | |
|-------------------|--|
| Safety Features | Automatic emergency shut-off / Spill and safety sensors / CO ₂ Sensor |
| Included Features | e-Ribbon Technology / Remote Control / App Operation / Large Fuel Tank / External Fuel Pump with Quick Connection / LCD display / Split flame configuration / Ceramic logs / Ember glass / Ember fibre |
| Add-on Features | SmartHome integration / Preparation for Automatic Tank System / Automatic Tank System 60 L + 10 m cable and hose |

DISCLAIMER – DECOFLAME ApS

All product specifications and technical data are subject to change without prior notice and are considered accurate as of the date of publication. Decoflame ApS, including its affiliates, employees, agents and other representatives (collectively referred to as "Decoflame ApS"), disclaims all liability for any errors, inaccuracies, or omissions in this document or in any other product-related information. Decoflame ApS shall not be held liable for any damage, loss, or indirect consequences arising from the use, installation, or operation of the products, unless otherwise required under applicable law. It is the user's responsibility to ensure correct installation and usage in accordance with applicable safety standards and the manufacturer's instructions. No licence, whether express or implied, to any intellectual property rights is granted through this document. Customers who use or sell Decoflame ApS products for purposes not explicitly specified do so at their own risk and agree to indemnify Decoflame ApS against any claims or damages resulting from such use. Fuel consumption may vary depending on individual units, environmental conditions, and operating parameters. Product images are for illustrative purposes only and may differ from the actual product. This limitation of liability does not apply where it would conflict with mandatory consumer protection laws.